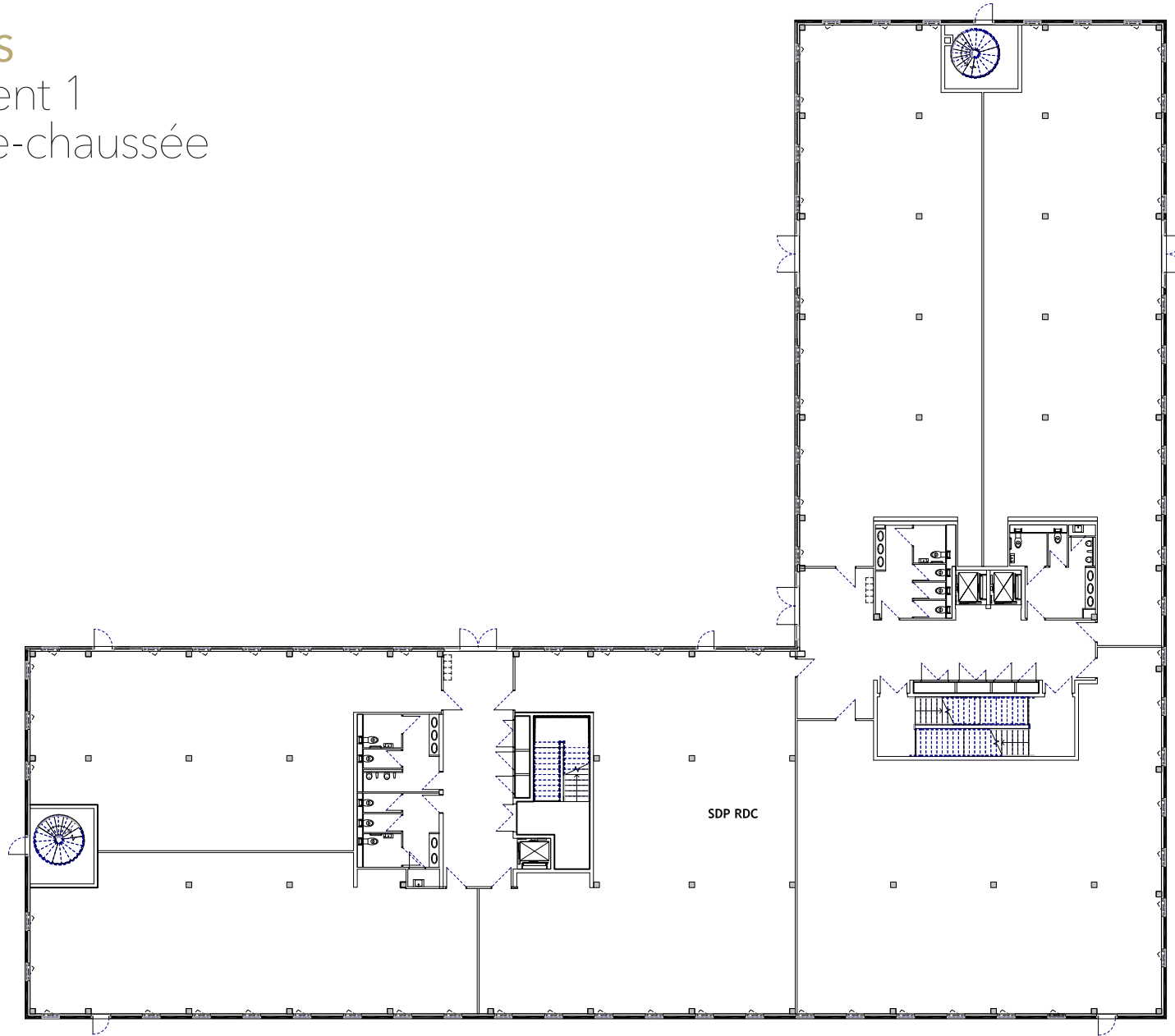


PLANS : IMMEUBLES DE BUREAUX

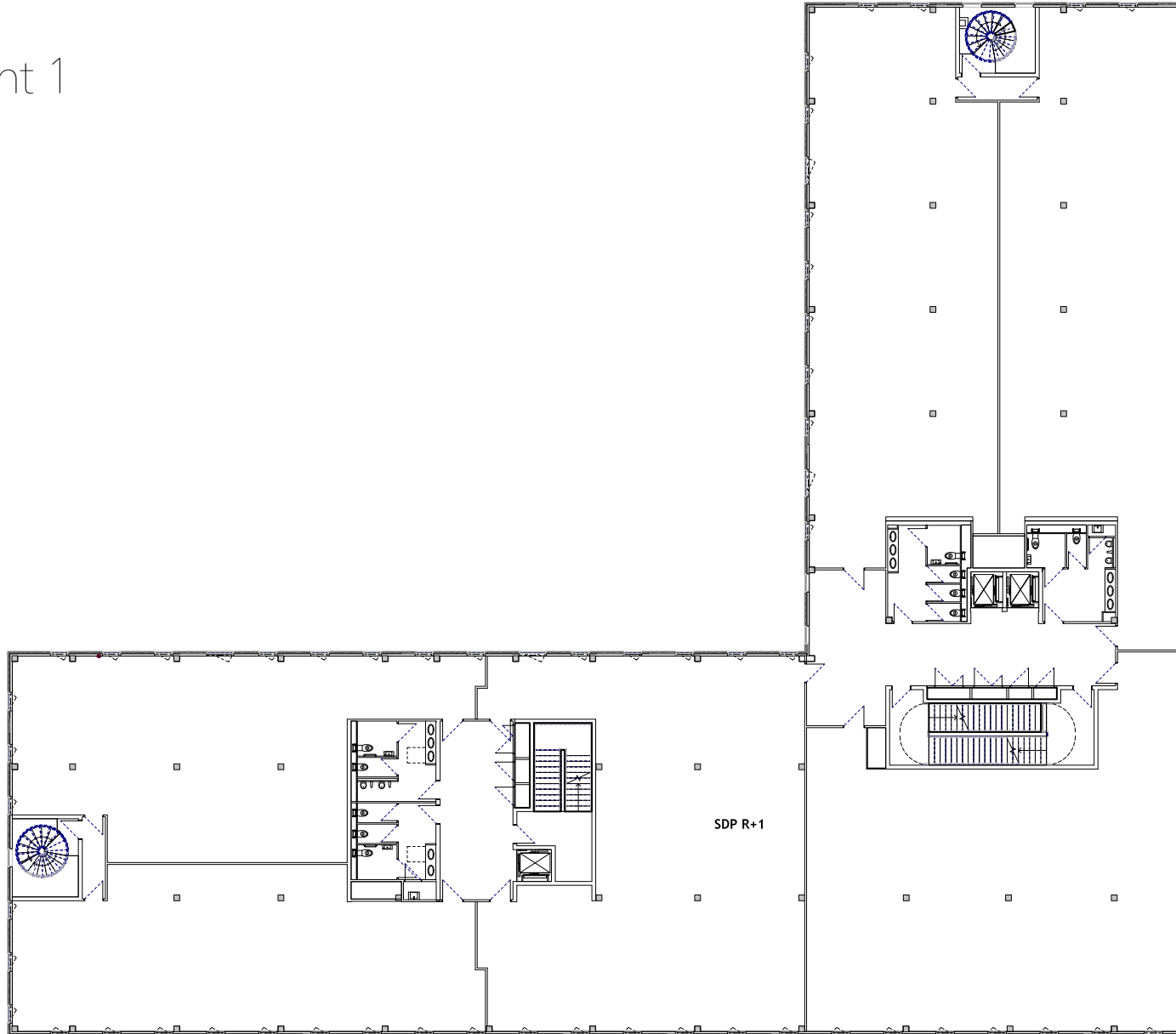
SERENIS AUSSONNE

SERENIS

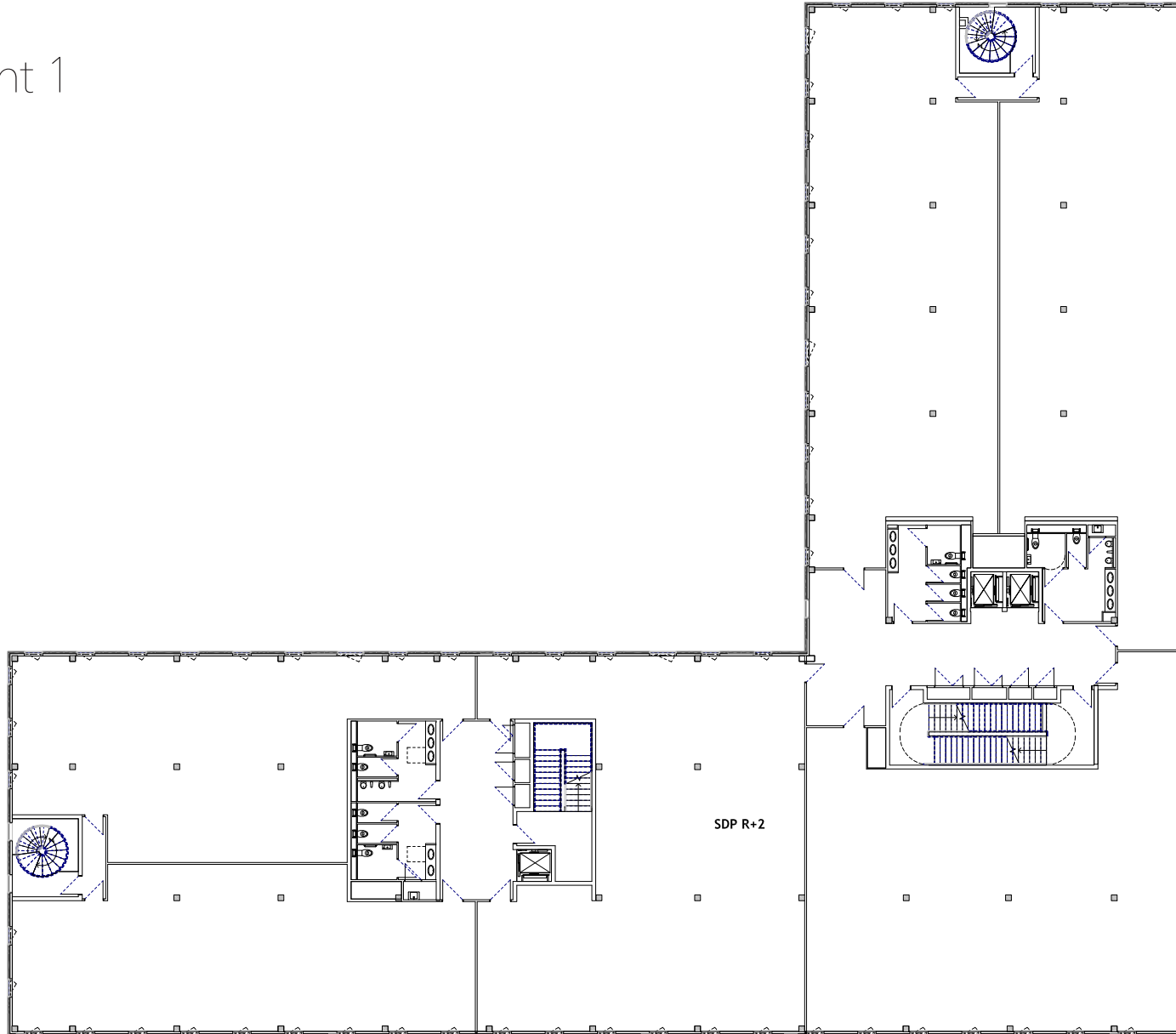
Bâtiment 1 Rez-de-chaussée



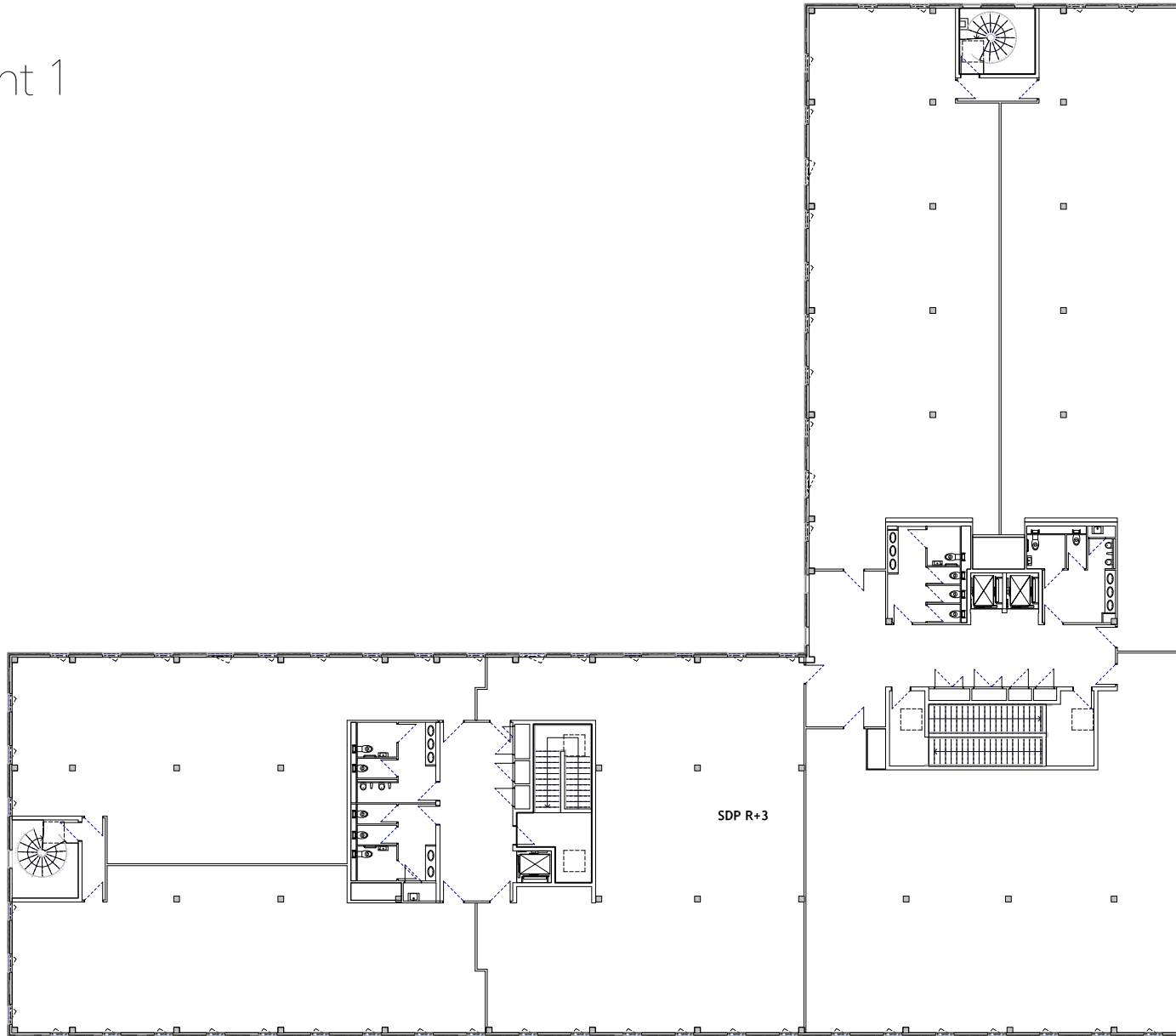
SERENIS
Bâtiment 1
R+1



SERENIS
Bâtiment 1
R+2

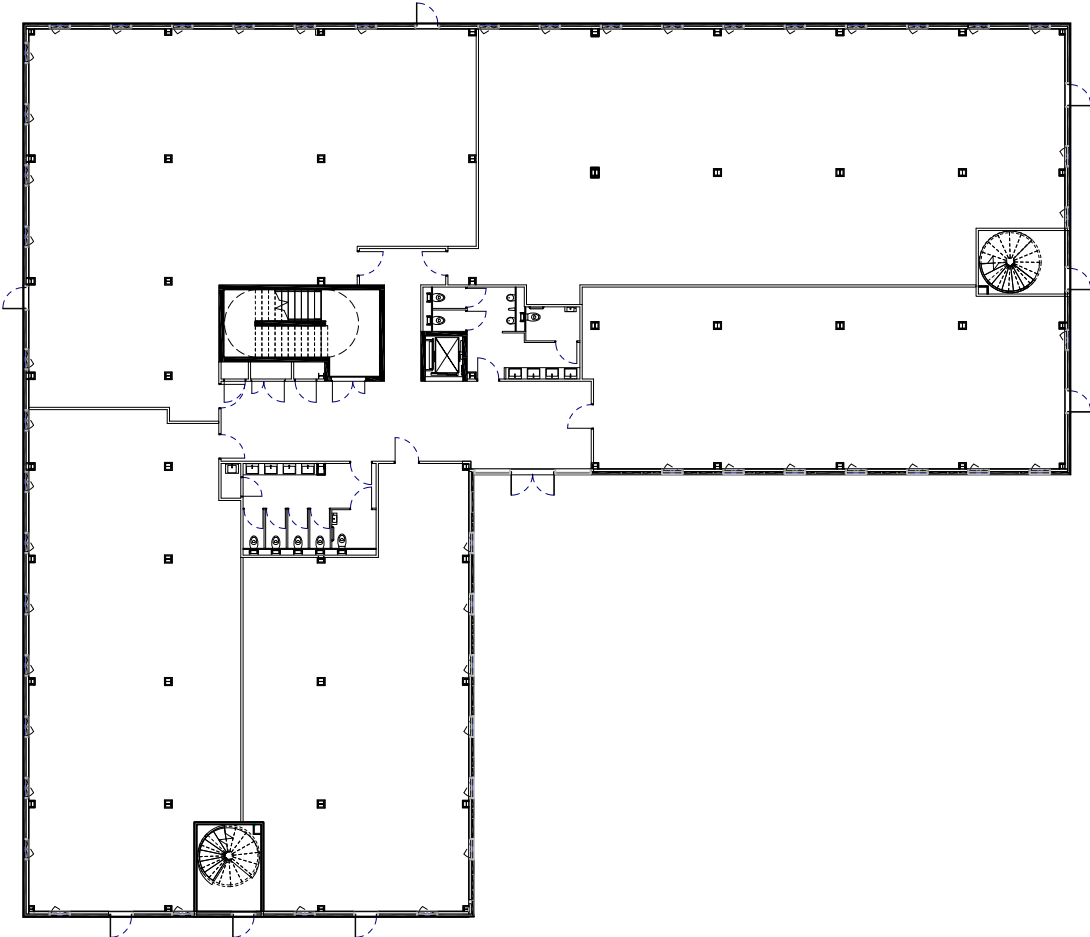


SERENIS
Bâtiment 1
R+3

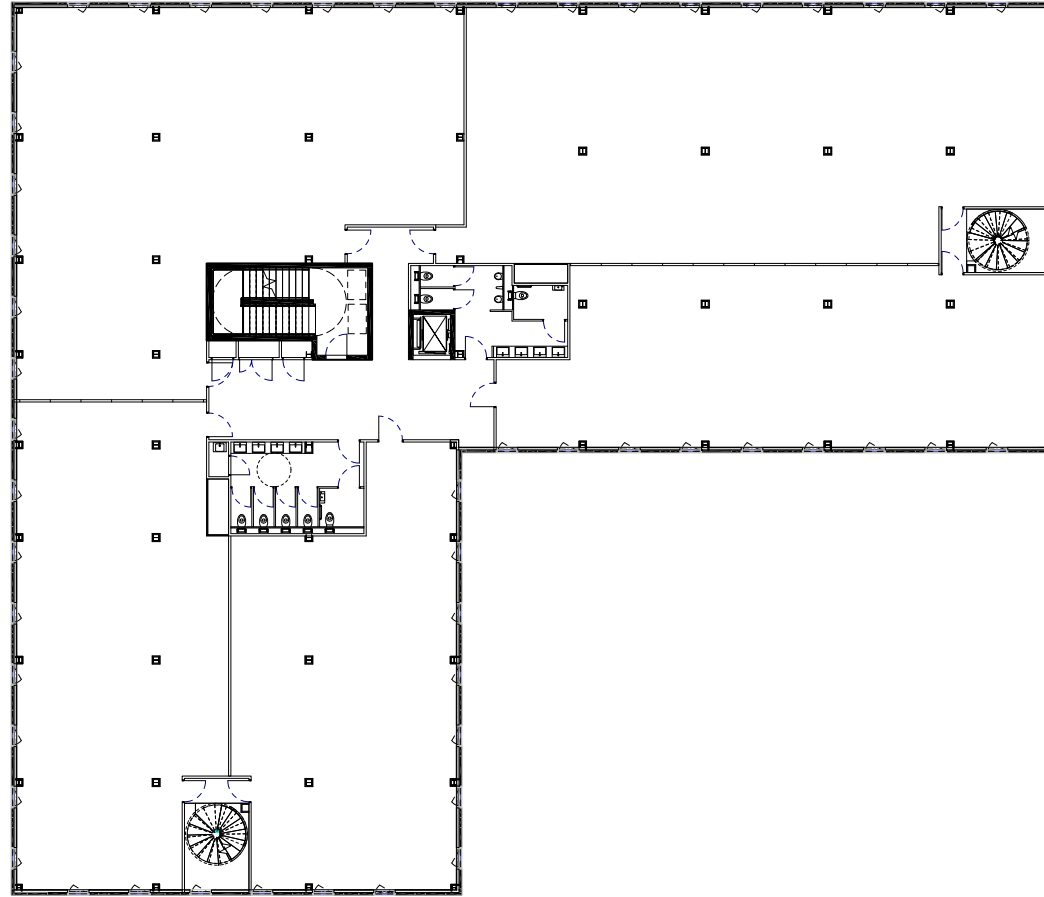


SERENIS

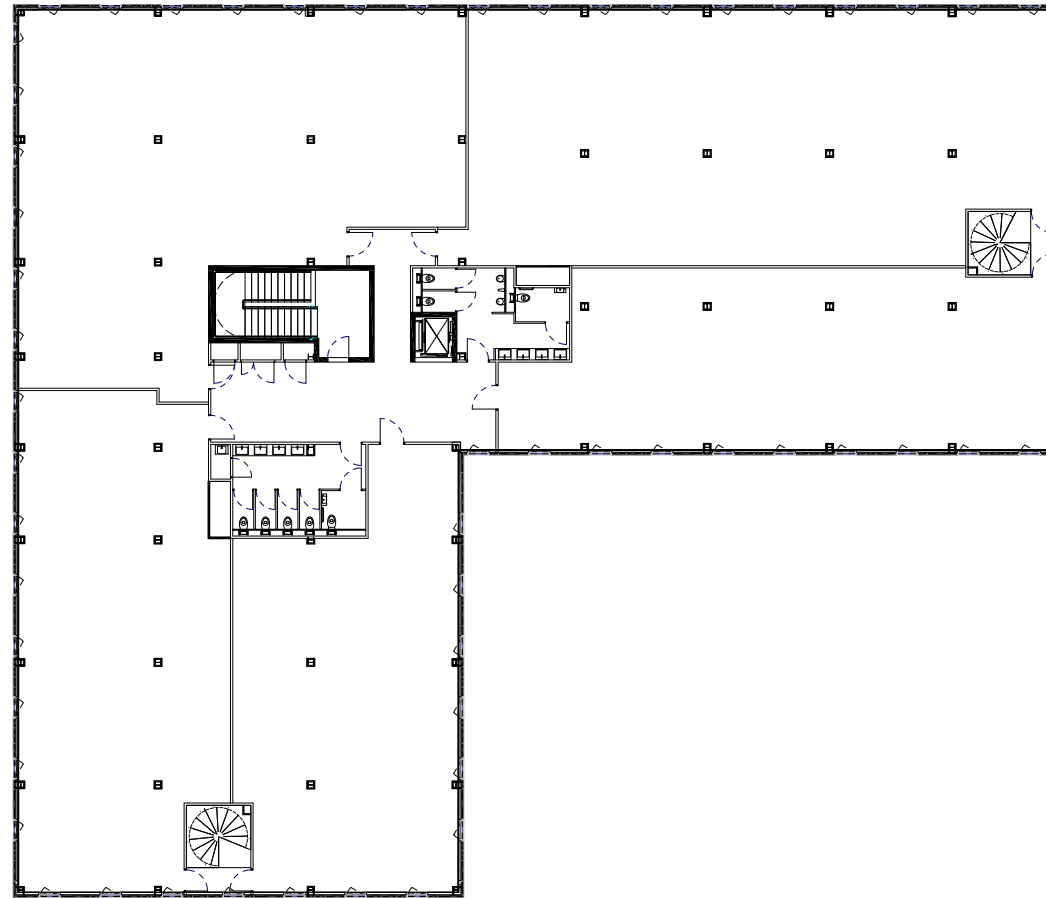
Bâtiment 2
Rez-de-chaussée



SERENIS
Bâtiment 2
R+1

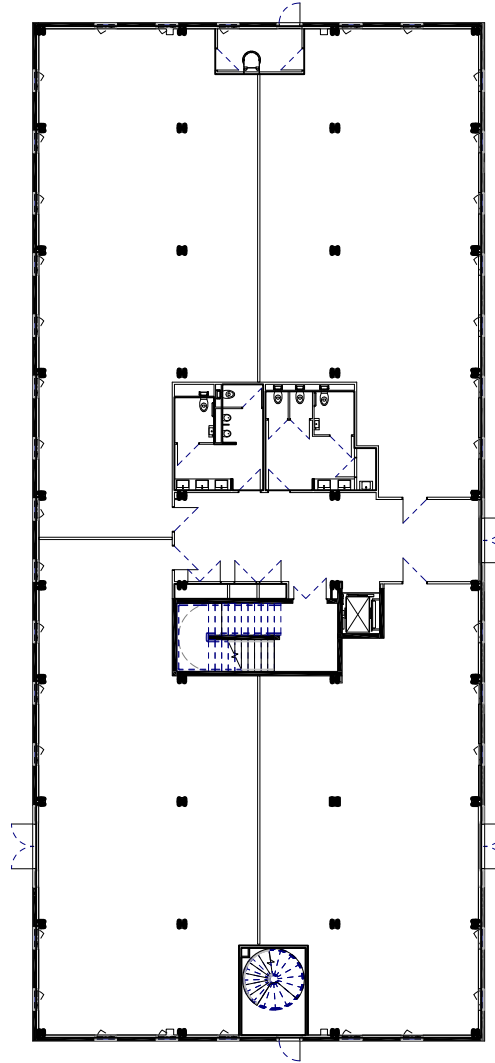


SERENIS
Bâtiment 2
R+2

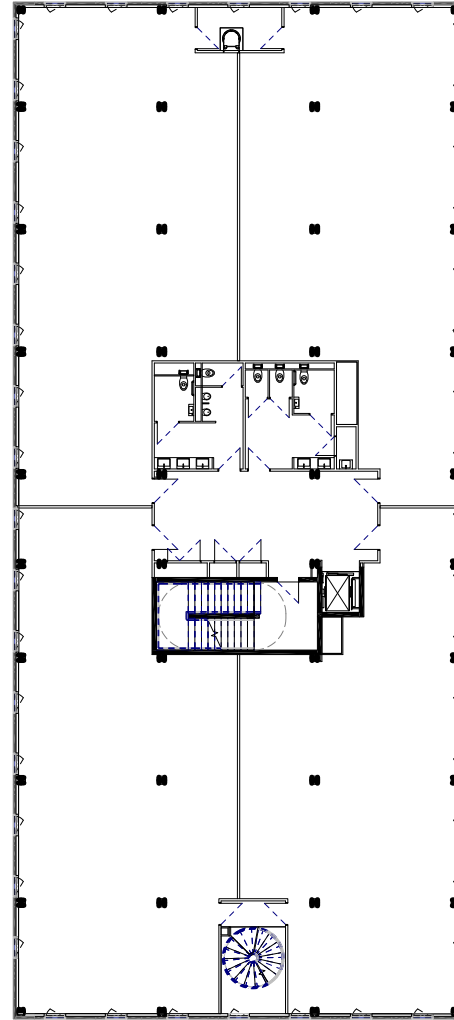


SERENIS

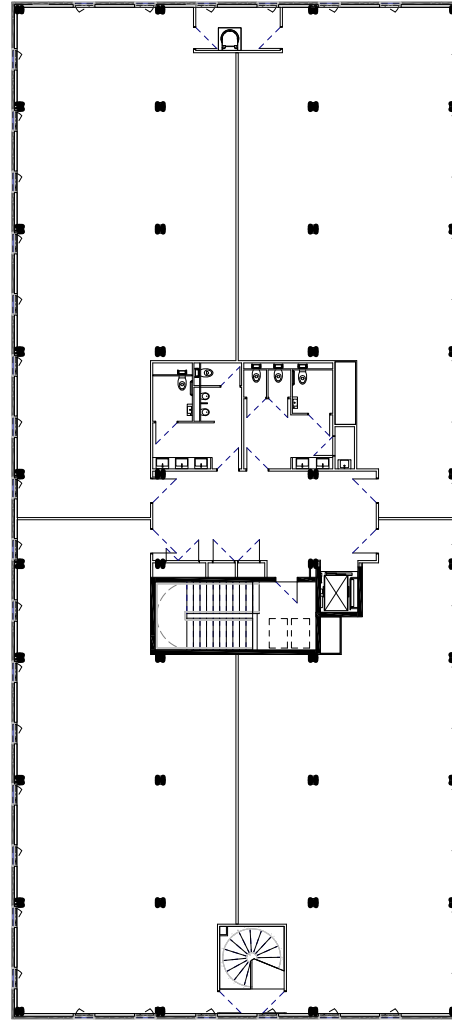
Bâtiment 3
Rez-de-chaussée



SERENIS
Bâtiment 3
R+1



SERENIS
Bâtiment 3
R+2





S.A. AU CAPITAL DE 281.506.400 €

SIÈGE

16, PLACE VENDÔME
75001 PARIS
T. +33 (0)1 44 55 07 07

BUREAU RÉGIONAL

DIRECTION RÉGIONALE
GRAND SUD
LES DOCKS - ATRIUM 10.6
ESPACE PROVENCE
10, PLACE DE LA JOLIETTE
13002 MARSEILLE
T. +33(0)4 91 13 45 29

WWW.LAZARD-SA.COM